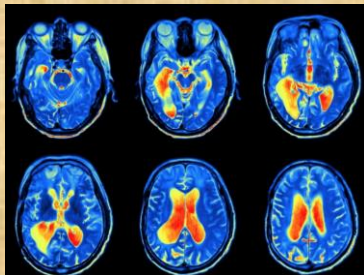


About Our Study:

The purpose of this study is to determine how the brain structure of children and young adults with Autism Spectrum Disorder (ASD), Obsessive Compulsive Disorder (OCD), Intellectual Disability (ID), and Attention Deficit Hyperactivity Disorder (ADHD) changes depending on age, disorder, and severity. Brain structure will be studied using a magnet (MRI test). The goal of this study is to understand how the brains of people with neurodevelopmental disorders grow and develop. Understanding this better will help researchers discover and test new therapies for people with neurodevelopmental disorders.



MRI scanner



An example of a “brain scan”, a picture of your brain taken with an MRI scanner.

Why am I being asked if I want to consider this study for myself or my child?

You are being asked because you or your child is between 6 months and 21 years old and has been diagnosed with autism spectrum disorder (ASD), obsessive compulsive disorder (OCD), intellectual disability (ID), or attention deficit hyperactivity disorder (ADHD).

Do I have to participate in this study?

No. It is up to you if you want to participate. If you decide to participate, you can withdraw from the study at any time.

Is MRI safe?

MRI poses no risk when appropriate safety guidelines are followed. In our MRI facility, all participants are carefully screened to ensure that no infant/child or person enters the scanner if they have any metal implants or device. *There is no harmful radiation with MRI.*

What will happen if I (or my child) is enrolled in this study?

You or your child will have an MRI test of his/her brain. This will take about 1 hour. You can watch a movie or TV show during these scans.

- The first scans will involve taking pictures of the different parts of your brain. This is called structural scanning.
- The second set of scans will be to measure the chemistry of your brain (magnetic resonance spectroscopy).
- Next, you will be asked to watch some short videos of shapes while in the MRI.
- After all the scans, you will be shown the shape videos again and asked to answer some questions about them.
- You may be asked to complete an optional second visit where you do the same tasks. This will allow us to see if anything has changed over time.